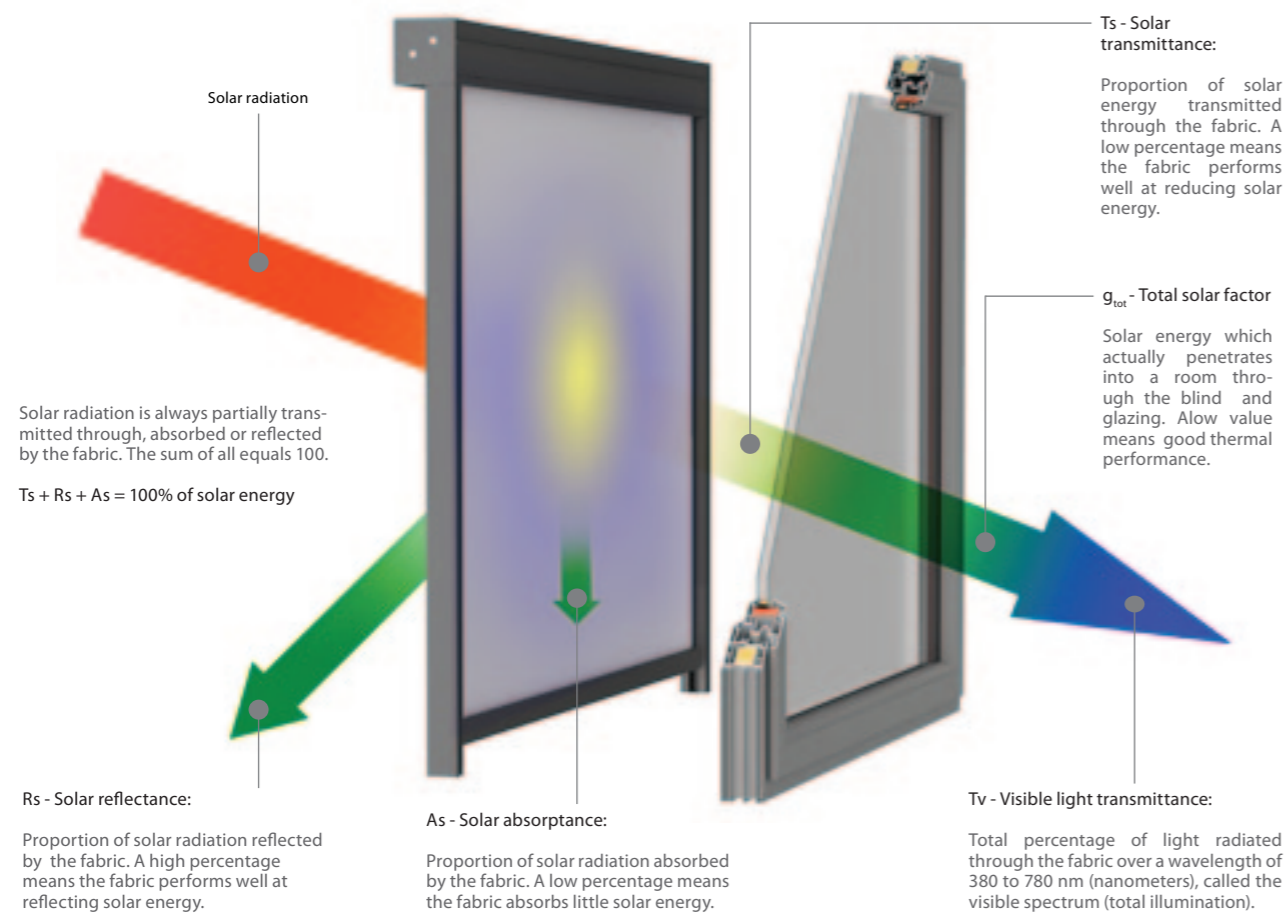




SCREEN FABRICS



OPENNES FACTOR:

Relative area of the openings in the fabric. It is considered as independent of the colour. For fabric with the same weave, it should be measured using the darkest colour in the range.

SERGE 1 % (100) / SERGE 600

Collection of fabrics made from fiberglass covered with PVC. Fabrics made of this group have a distinctive diagonal „serge” weave, which guarantees them an unusual dimensional stability. High fire resistance and very good technical parameters of fabrics provide users with visual comfort in rooms, thus protecting against overheating the interior.

POLYSCREEN

Wide group of technical polyester fabrics coated with PVC, characterized by variety of weaving patterns and properties (PS Luminous, PS 550, PS 350). This allows architects to select the right solution, increasing visual attractiveness of the building and to emphasize its individual character. High technical parameters provide optical and thermal comfort inside the room. An additional feature of the fabric is the ease to keep it clean.

BLACK OUT

High-end blackout fabrics (Serge 600 BO Lunar, Polyscreen 314 BO) effectively block sunlight coming into the room. It is ideal solution for conference rooms, audio-visual, photographic studios, etc. High dimensional stability, high technical parameters and interesting colours are without a doubt advantages of fabrics in this group.

SUNWORKER

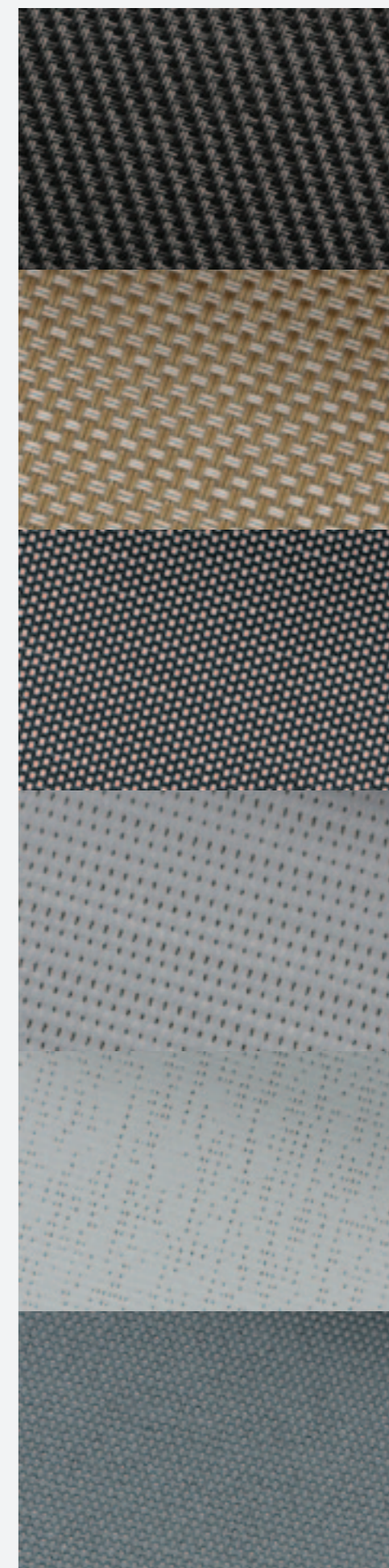
Smooth polyester fabric finished with PVC. Unique structure of the fabric effectively stops the sunlight, allowing for just optimal amount of visible light to transmit inside the room, providing high comfort to its users. The advantages of this fabric are: color fastness, high resistance to weather conditions and easy to maintain clean.

SOLTIS 92 / SOLTIS 99

Polyester technical fabric coated with PVC, manufactured with patented technology Precontraint Ferrari®. The unique technology gives fabric high stability and protects it against deformations even in large size blinds. High technical parameters guarantee optical and thermal comfort. The quality components used in production of this fabric ensures color fastness. Thanks to the smooth surface, the fabric is difficult to absorb dirt or get stained.

ACOUSTIC - VEROGLIM

Elegant fabric, made from the highest quality non-flammable polyester fibers Trevira® CS, intended for indoor use. Because of its weight, the fabric is ideally suited for cassette systems. An important advantage of this fabric is high coefficient of acoustics. Thanks to its structure, the fabric absorbs sound and mutes the room. Another advantage is metallic surface that reflects bright light and in this way regulates its intensity in the room.



SERGE 600

WHITE - WHITE



60002002

GREY - WHITE



60001002

PEARL - GREY



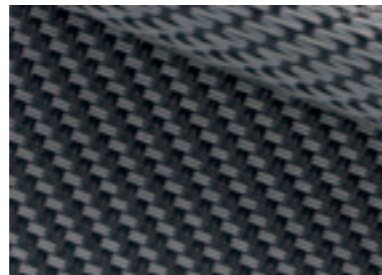
60007007

GREY - GREY



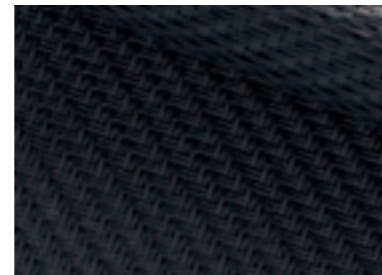
60001001

GREY - CHARCOAL



60001010

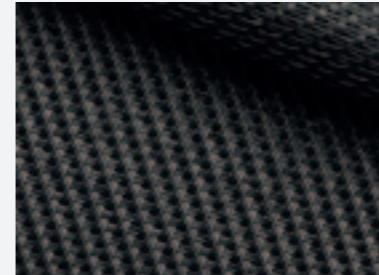
CHARCOAL - CHARCOAL



60010010

SERGE 600

PURE BLACK



60030030

CHARCOAL - BRONZE



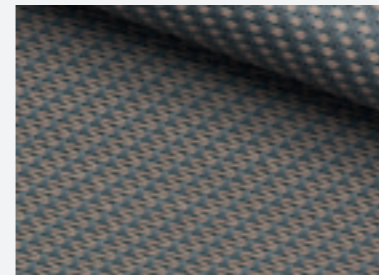
60010011

SANDSTONE



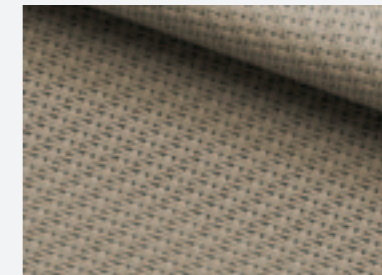
60033033

GREY - SAND



60001003

LINEN - LINEN



60008008

LINEN - WITE

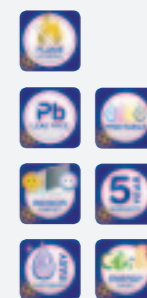


60008002

	composition	weight [g/m ²]	thickness [mm]	light fastness blue scale level EN ISO 105 B02 EN ISO 105 B04	openness factor [%]	EN 14501				application
						TS [%]	RS [%]	AS [%]	TV [%]	
White - White	42% glasfibre + 58% pvc	525	0.74	>7	5	21/21	65.9/66.3	13.2/12.7	21.2/21.2	interior / exterior SERGE 600
Grey - White						6.7/6.7	37.2/26.9	56.2/66.4	6.6/6.6	
Pearl - Grey						10.1/10.1	38.3/39.4	51.7/50.5	8.4/8.4	
Grey - Grey						3.5/3.5	15.1/15.1	81.3/81.4	3.6/3.6	
Grey - Charcoal						3.6/3.6	9.9/12.6	86.5/83.8	3.6/3.6	
Charcoal - Charcoal						3.6/3.6	5.0/4.8	91.4/91.6	3.6/3.6	
Tearing resistance (daN) UNE EN ISO 4674-1 method 2 - Warp: 8.5, Weft: 7.5 Breaking strength (daN/5cm) UNE EN ISO 1421 - Warp: 260, Weft: 225 Flame retardant - Certificate on request										



	composition	weight [g/m ²]	thickness [mm]	light fastness blue scale level EN ISO 105 B02 EN ISO 105 B04	openness factor [%]	EN 14501				application
						TS [%]	RS [%]	AS [%]	TV [%]	
Pure Black	42% glasfibre + 58% pvc	525	0.74	>7	5	5.9	3.7	90.4	5.9	interior / exterior SERGE 600
Charcoal - Bronze						6.1	6.5/6.0	87.4/87.9	6.1	
Sandstone						7.1	20.4/20.5	72.4/72.5	6.8	
Grey - Sand						4.7	26.5/21.5	68.8/73.8	4.5	
Linen - Linen						14.9	52.5/52.7	32.5/32.4	12.9	
Linen - Wite						15.5	58.2/56.4	26.4/28.1	13.7	
Tearing resistance (daN) UNE EN ISO 4674-1 method 2 - Warp: 8.5, Weft: 7.5 Breaking strength (daN/5cm) UNE EN ISO 1421 - Warp: 260, Weft: 225 Flame retardant - Certificate on request										



SERGE 1%

WHITE - WHITE



61002002

GREY - WHITE



61001002

PEARL - GREY



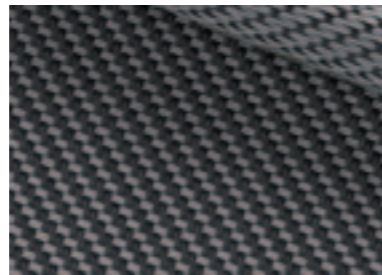
61007007

GREY - GREY



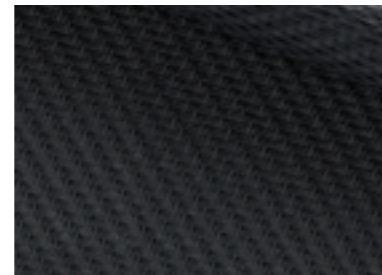
61001001

GREY - CHARCOAL



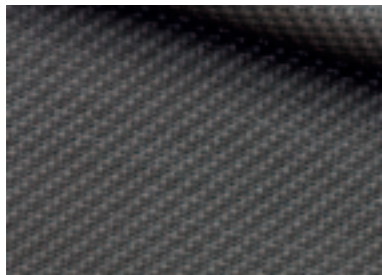
61001010

CHARCOAL - CHARCOAL



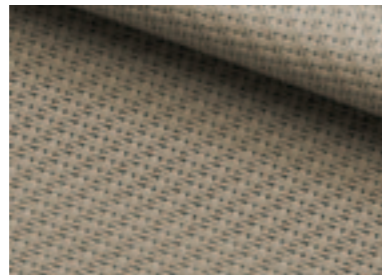
61010010

BRONZE - BRONZE



61011011

LINEN - LINEN



61008008

	composition	weight [g/m ²]	thickness [mm]	light fastness blue scale level EN ISO 105 B02 EN ISO 105 B04	openness factor [%]	EN 14501				application						
						TS [%]	RS [%]	AS [%]	TV [%]							
White - White	42% glasfibre + 58% pvc	638	0.78	>7	1	12.8	71.3	15.9	12.9	interior / exterior						
Grey - White						2.2	44.8/31.2	53/66.6	2							
Pearl - Grey						2.8	36.9	60.3	2.1							
Grey - Grey						2.4	17.4	80.2	2.2							
Grey - Charcoal						1.2	10.5/14	88.3/84.8	1.2							
Charcoal - Charcoal						1.1	5.9	93	1.1							
Bronze - Bronze						1.4	8.6	90	1.3							
Linen - Linen						5.9	54.2	39.9	3.7							
Tearing resistance (daN) UNE EN ISO 4674-1 method 2 - Warp: 5.9, Weft: 6.2 Breaking strength (daN/5cm) UNE EN ISO 1421 - Warp: 321, Weft: 277 Flame retardant - Certificate on request																

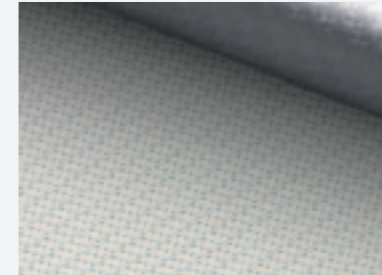
SERGE 1%



SERGE 600

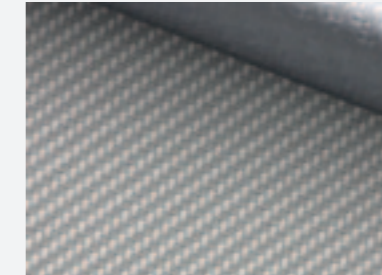
BO LUNAR

WHITE - WHITE



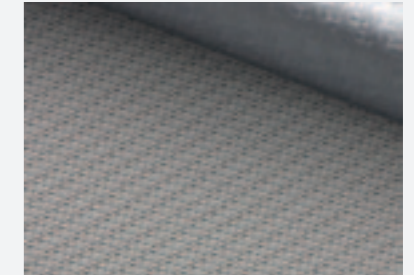
680002002

WHITE - PERL GREY



680002007

PEARL GREY - PEARL GREY



680007007

WHITE - GREY



680001002

OYSTER SHELL



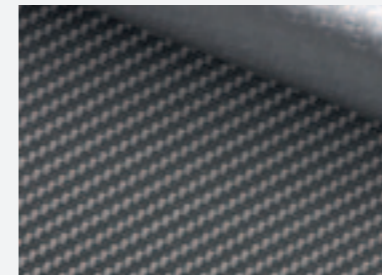
680033001

GREY - GREY



680001001

GREY - CHARCOAL



680001010

CHARCOAL - CHARCOAL



680010010

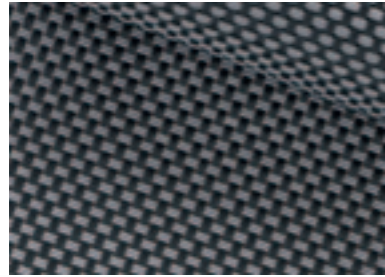
	composition	weight [g/m ²]	thickness [mm]	light fastness blue scale level EN ISO 105 B04	openness factor [%]	EN 14501				application						
						TS [%]	RS [%]	AS [%]	TV [%]							
White - White	33% GLASFIBRE 47% PVC 20% PVC LAMINATE	678	0.73	>7	0	0	68.8/33.7	31.2/66.3	0	interior / exterior						
White - Perl Grey						0	47.8/33.2	52.2/66.8	0							
Pearl Grey - Pearl Grey						0	35.5/34	64.5/66	0							
White - Grey						0	40.3/33.7	59.7/66.3	0							
Oyster Shell						0	18.2/33.4	81.8/66.6	0							
Grey - Grey						0	17.2/33.1	82.8/66.9	0							
Grey - Charcoal						0	11/33.7	89/66.3	0							
Charcoal - Charcoal						0	6.2/33.4	93.8/66.6	0							
Tearing resistance (daN) UNE EN ISO 4674-1 method 2 - Warp: 8.5, Weft: 9 Breaking strength (daN/5cm) UNE EN ISO 1421 - Warp: 224.2, Weft: 176.6 Flame retardant - Certificate on request																

SERGE 600 BO LUNAR



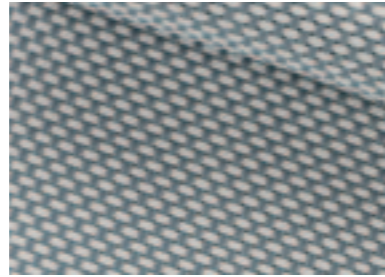
POLYSCREEN® 550

ASH (EBONY - GREY)



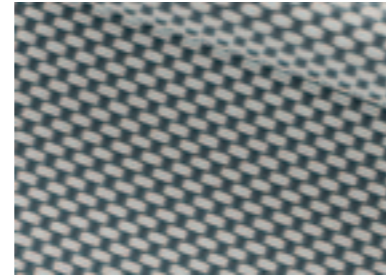
10550017

PEARL - GREY



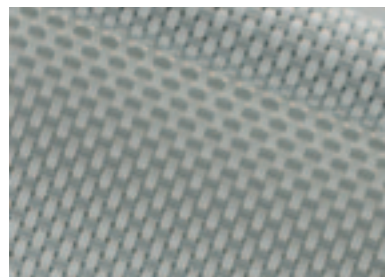
10550013

WHITE - GREY



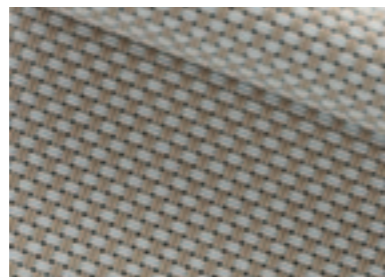
10550012

WHITE - PEARL



10550011

PEARL - SAND



10550023

PEARL - LINEN



10550021

WHITE - LINEN



10550019

WHITE



10550009

	composition	weight [g/m²]	thickness [mm]	light fastness blue scale level EN ISO 105 B02	light fastness grey scale level EN ISO 4892	openness factor [%]	internal method				application
							TS [%]	RS [%]	AS [%]	TV [%]	
							POLYSCREEN® 550				
Ash (Ebony - Grey)	85% PVC + 15% PES	610 ± 5%	0,78 ± 5%	8/8	5/5	5	6	7	87	6	interior / exterior
Pearl - Grey				8/8	5/5		11	29	60	9	
White - Grey				≥7/8	≥ 4/5		13	37	50	12	
White - Pearl				≥7/8	≥ 4/5		16	57	27	12	
Pearl - Sand				8/8	5/5		13	37	50	10	
Pearl - Linen				8/8	5/5		17	46	37	12	
White - Linen				≥7/8	≥ 4/5		20	63	17	16	
White				7/8	4/5		19	69	12	15	

Tearing resistance (daN) UNE EN ISO 13937-3:2001 - Warp: 6,6, Weft: 5,3
 Breaking strength (daN/5cm) UNE EN ISO 13934-1:1999 - Warp: 174, Weft: 133
 Stretch (%) UNE EN ISO 13934-1:1999 - Warp: 22%, Weft: 21%
 Flame retardant - certificate on request

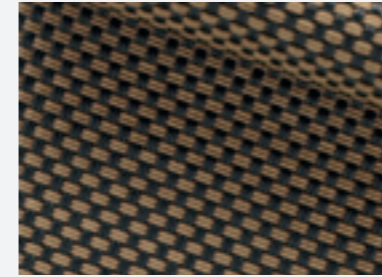


0338

POLYSCREEN® 550

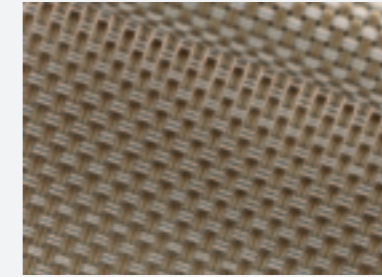
GOLD & SILVER

EBONY - GOLD



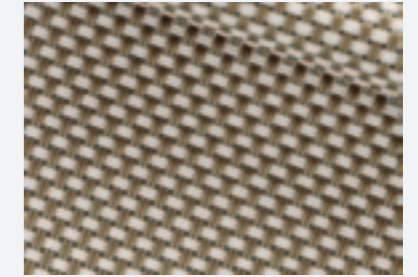
10550051

CRYSTAL - GOLD VISION



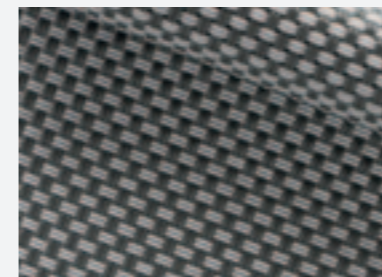
10550052

LINEN - GOLD



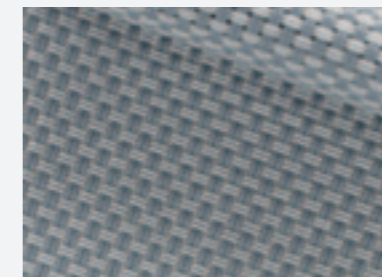
10550053

BRONZE - SILVER



10550041

GREY - SILVER



10550042

SILVER VISION



10550043

	composition	weight [g/m²]	thickness [mm]	light fastness blue scale level EN ISO 105 B02	light fastness grey scale level EN ISO 4892	openness factor [%]	internal method				application
							TS [%]	RS [%]	AS [%]	TV [%]	
							POLYSCREEN® 550 GOLD & SILVER				
Ebony - Gold	85% PVC + 15% PES	610 ± 5%	0.78	8/8	5/5	5	*	*	*	11	interior / exterior
Crystal - Gold Vision							18	17	65	22	
Linen - Gold							13	25	62	14	
Bronze - Silver							17	14	69	17	
Grey - Silver							16	17	67	17	
Silver Vision	21	23	56	22							

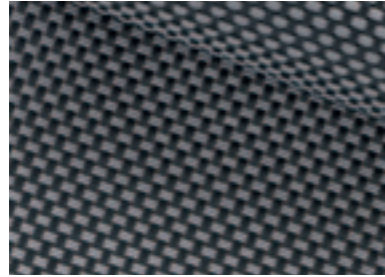
* On request
 Tearing resistance (daN) UNE EN ISO 13937-3:2001 - Warp 6,6, Weft 5,3
 Breaking strength (daN/5cm) UNE EN ISO 13934-1:1999 - Warp 174, Weft 133
 Stretch (%) UNE EN ISO 13934-1:1999 - Warp 22, Weft 21
 Flame retardant - certificate on request



0338

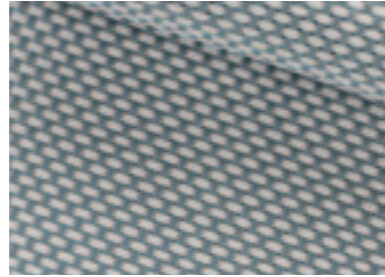
POLYSCREEN® 350

ASH (EBONY - GREY)



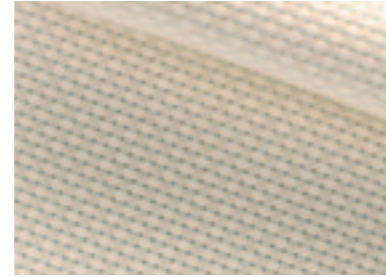
10550017

PEARL - GREY



10550013

WHITE - LINEN



10350019

WHITE



10350009

	composition	weight [g/m ²]	thickness [mm]	light fastness blue scale level EN ISO 105 B02	light fastness grey scale level EN ISO 4892	openness factor [%]	internal method				application
							TS [%]	RS [%]	AS [%]	TV [%]	
Ash (Ebony - Grey)	80% PVC + 20% PES	400 ± 5%	0.53 ± 5%	8/8	5/5	10	10	8	82	10	Interior
Pearl - Grey				8/8	5/5		16	26	58	14	
White - Linen				≥7/8	≥ 4/5		27	58	15	23	
White				7/8	4/5		25	64	11	22	

Tearing resistance (daN) UNE EN ISO 13937-3:2001 - Warp: 4.8, Weft: 5.2
 Breaking strength (daN/5cm) UNE EN ISO 13934-1:1999 - Warp: 145, Weft: 127
 Stretch (%) UNE EN ISO 13934-1:1999 - Warp: 21%, Weft: 23%
 Flame retardant - certificate on request

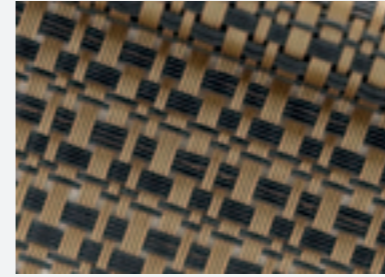
POLYSCREEN® 350



0338

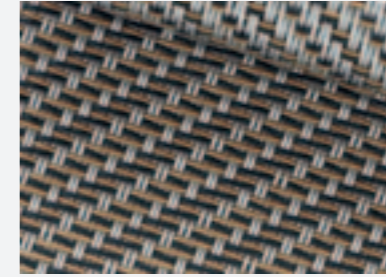
POLYSCREEN® LUMINOUS

ARIZONA



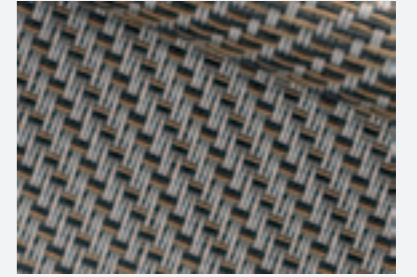
10550061

SAHARA A



10550062

SAHARA B



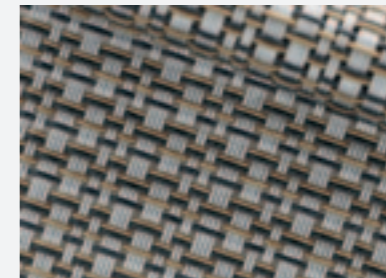
10550062

KALAHARI



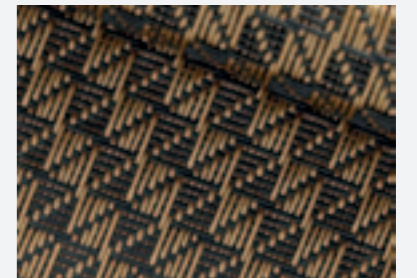
10550064

ATACAMA



10550065

MOJAVE



10550066

	composition	weight [g/m ²]	thickness [mm]	light fastness blue scale level EN ISO 105 B02	light fastness grey scale level EN ISO 4892	openness factor [%]	internal method				application	
							TS [%]	RS [%]	AS [%]	TV [%]		
Arizona	85% PVC + 15% PES	511 ± 5%	0.78	8/8	5/5	13	15	10	75	16	interior / exterior	
Sahara A		612 ± 5%	0.82				6	10	15	75		11
Sahara B		612 ± 5%	0.82				6	10	12	78		10
Kalahari		555 ± 5%	0.80				7	23	23	54		23
Atacama		594 ± 5%	0.77				10	20	14	66		22
Mojave		516 ± 5%	0.90				11	14	8	78		14

Tearing resistance (daN) - On request
 Breaking strength (daN/5cm) - On request
 Stretch (%) UNE EN ISO 13934-1:1999 - On request
 Flame retardant - On request

POLYSCREEN® LUMINOUS

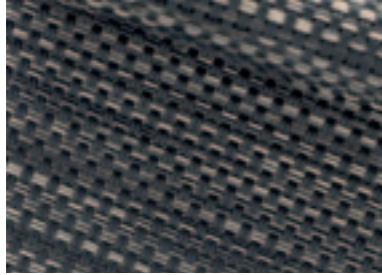


0338

POLYSCREEN® 550

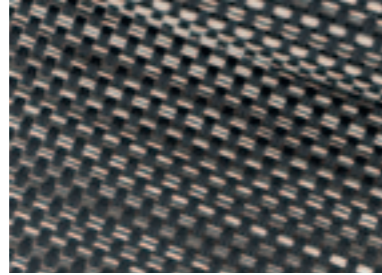
COUPAGE

COUPAGE 1



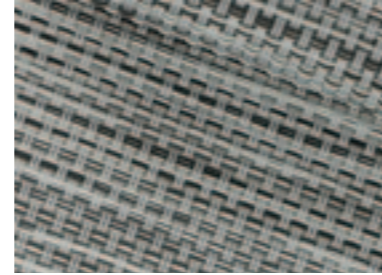
10550031

COUPAGE 2



10550032

COUPAGE 3



10550033

COUPAGE 4



10550034

	composition	weight [g/m ²]	thickness [mm]	light fastness blue scale level EN ISO 105 B02	light fastness grey scale level EN ISO 4892	openness factor [%]	internal method				application
							TS [%]	RS [%]	AS [%]	TV [%]	
Coupage 1	85% PVC + 15% PES coated with PVC	610 ± 5%	0.78	8/8	5/5	5	*	*	*	10	interior / exterior
Coupage 2							*	*	*	12	
Coupage 3							*	*	*	19	
Coupage 4							*	*	*	17	

* On request
 Tearing resistance (daN) UNE EN ISO 13937-3:2001 - Warp: 6.6, Weft: 5.3
 Breaking strength (daN/5cm) UNE EN ISO 13934-1:1999 - Warp: 174, Weft: 133
 Stretch (%) UNE EN ISO 13934-1:1999 - Warp: 22, Weft: 21
 Flame retardant - certificate on request

POLYSCREEN® 550 COUPAGE



0338

POLYSCREEN® 314

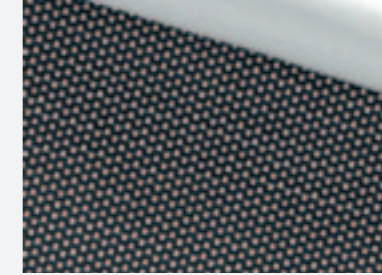
BLACK OUT

EBONY - GREY



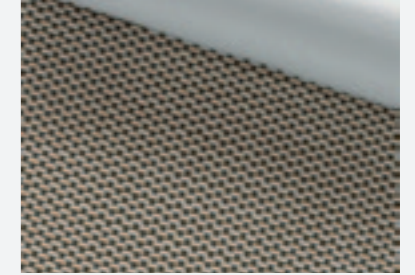
10314B20

EBONY - LINEN



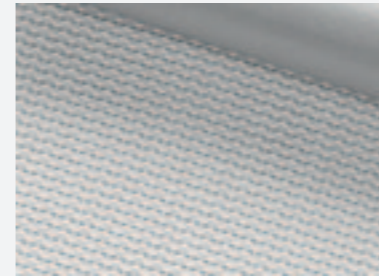
10314B08

LINEN - BRONZE



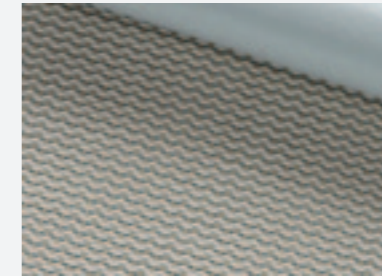
10314B06

WHITE



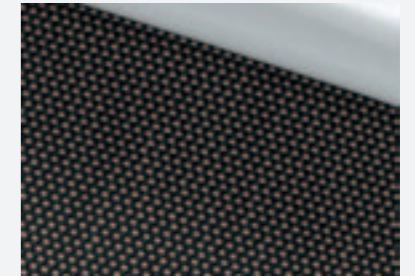
10314B02

LINEN - SAND



10314B04

EBONY - SAND



10314B10

	composition	weight [g/m ²]	thickness [mm]	light fastness blue scale level EN ISO 105 B02	light fastness grey scale level EN ISO 4892	openness factor [%]	EN 14501				application
							TS [%]	RS [%]	AS [%]	TV [%]	
Ebony - Grey	80% PVC + 20% PES coated with PVC	610 ± 5%	0.66 ± 5%	8 / 8	4/5	0	0	36	64	0	Interior
Ebony - Linen				8 / 8							
Linen - Bronze				8 / 8							
White				7 / 8							
Linen - Sand				8 / 8							
Ebony - Sand				8 / 8							

Tearing resistance (daN) UNE EN ISO 13937-3:2001 - Warp: 4.4, Weft: 2.5
 Breaking strength (daN/5cm) UNE EN ISO 13934-1:1999 - Warp: 147, Weft: 91
 Stretch (%) UNE EN ISO 13934-1:1999 - Warp: 26.7%, Weft: 17.6%
 Flame retardant - certificate on request

POLYSCREEN® 314 BLACK OUT



0338

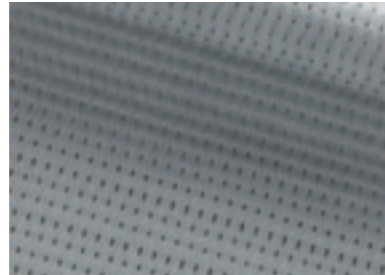
SUNWORKER

WHITE



40SWK005

IRON



40SWK653

CHAMPAGNE



40SWK711

CHARCOAL



40SWK392

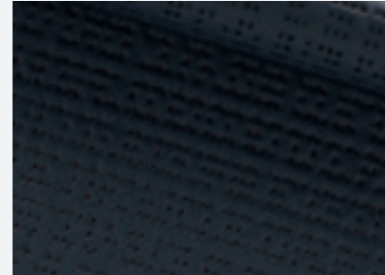
	composition	weight [g/m ²]	thickness [mm]	light fastness blue scale level EN ISO 105 B02	light fastness grey scale level EN ISO 105 B04	openness factor [%]	EN 14501				application
							TS [%]	RS [%]	AS [%]	TV [%]	
White	Polyester / PVC	300	0.42	7/8	4-5/5	6	23	66	11	21	interior / exterior
Iron						6	12	35	53	10	
Champagne						6	21	50	29	18	
Charcoalw						6	6	7	87	6	

Tearing strength (daN/5cm) DIN 53.363 - Warp: 43, Weft: 22
 Tensile strength (daN/5cm) NF EN ISO 13934-1 - Warp: 220, Weft: 150
 Flame retardant - certificate on request



SOLTIS® 92

CHARCOAL



50922047

CONCRETE



50922167

GLOSSY



50922065

SILVER



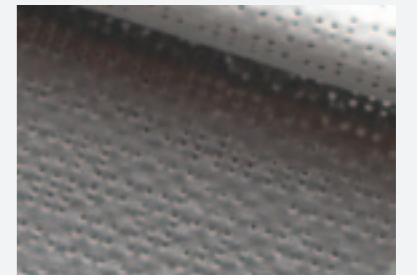
50922048

SILVER BLACK



50922045

SILVER - WHITE



50922051

SANDY BEIGE



50922135

WHITE



50922044

	composition	weight [g/m ²]	thickness [mm]	light fastness grey scale level EN ISO 105 B04	openness factor [%]	EN 14501				application
						TS [%]	RS [%]	AS [%]	TV [%]	
Charcoal	Polyester / PVC	420	0.45	5/5	4	5	8	87	5	interior / exterior
Concrete				5/5		6	19	75	5	
Glossy				4/5		10	46	44	7	
Silver				2/5		8	46	46	8	
Silver Black				5/5		4	35	61	4	
Silver - White				4/5, 3/5		12/12	49/70	39/18	11/11	
Sandy Beige				5/5		11	46	43	8	
White				2/5		19	68	13	17	

Tear strength (daN) DIN 53.363 - Warp: 45, Weft: 20
 Tensile strength (daN/5cm) EN ISO 1421 - Warp: 310, Weft: 210
 Flame retardant - certificate on request



SOLTIS® 99

WHITE



50992055

QUARTZ



509950285

SANDY BEIGE



509950286

SPUME



509950284

LIGHT GREY



50992058

ALU



50992059

ANTRACITE



50992068

	composition	weight [g/m ²]	thickness [mm]	light fastness grey scale level EN ISO 105 B04	openness factor [%]	EN 14501				application
						TS [%]	RS [%]	AS [%]	TV [%]	
White	Polyester / PVC	290	0.32	4/5, 4/5	3	14/14	47/63	39/23	13	interior
Quartz				4/5, 5/5		11/11	47/60	42/29	9	
Sandy Beige				4/5, 5/5		10/10	43/44	47/46	7	
Spume				4/5, 4/5		12/12	47/60	41/28	9	
Light Grey				4/5, 5/5		8/8	44/43	48/49	6	
Alu				4/5, 4/5		6	43	51	5	
Antracite				4/5, 5/5		3/3	33/8	64/89	3	

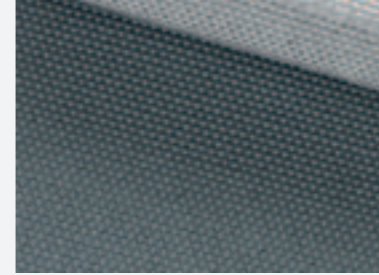
Tear strength (daN) DIN 53.363 - Warp: 11, Weft: 13
 Tensile strength (daN/5cm) EN ISO 1421 - Warp: 160, Weft: 170
 Flame retardant - certificate on request



SOLTIS® 99

VEROGLIM ACOUSTIC

GREY - SILVER



34022115

LIGHT GREY - SILVER



34022114

WHITE - SILVER



34022111

IVORY - SILVER



34022113

	composition	weight [g/m ²]	thickness [mm]	light fastness blue scale level EN ISO 105 B02	openness factor [%]	DIN EN 410				application
						TS [%]	RS [%]	AS [%]	TV [%]	
Grey - Silver	Trevira CS	220	0.43	5-6/8	1	5	50	45	2	interior
Light Grey - Silver						5	52	43	4	
White - Silver						7	52	41	7	
Ivory - Silver						6	49	45	6	

Breaking strength (daN/5cm) UNE EN ISO 13934-1:1999 - Warp: 95, Weft: 130
 Stretch (%) UNE EN ISO 13934-1:1999 - Warp: 35%, Weft: 23%
 Flame retardant - Certificate on request

VEROGLIM ACOUSTIC



$\alpha_w = 60\%$

